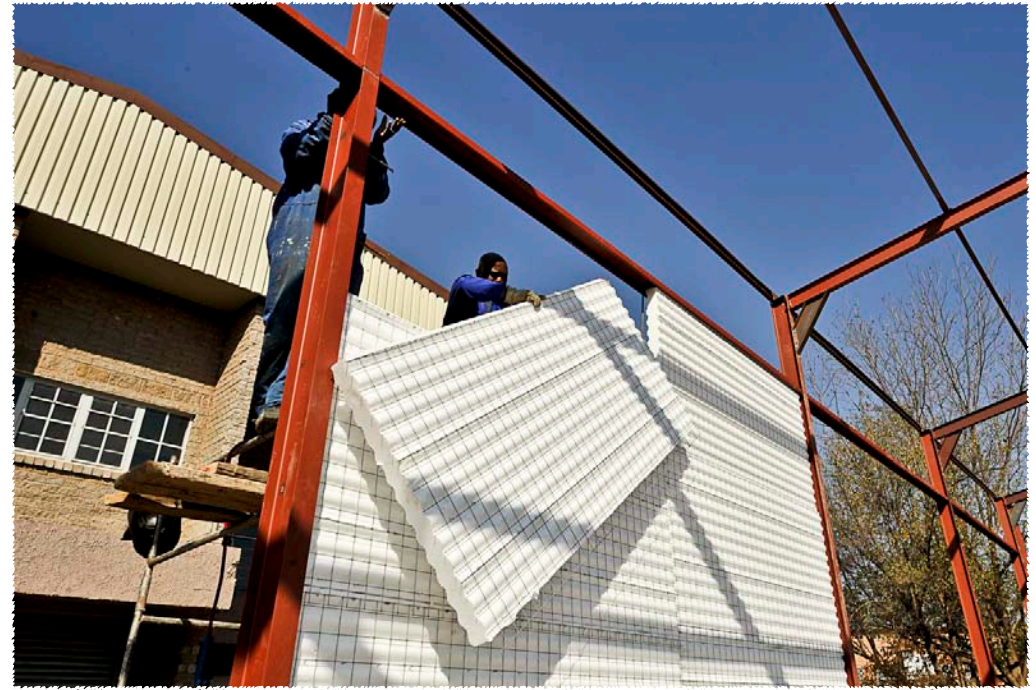


Commercial and Industrial



CENTURION, GAUTENG
 Factory warehouse built using a steel structure with Futurehouse panels as infill panels. Once the panels had been secured and propped from the inside they are plastered using a readmix from a silo and plastering machines. Final plaster finish can also be done by hand.



The same principle could be used for shopping centres, multi storey constructions where there is already a frame (concrete or steel) in place.

